



Pay Equity Hearings Tribunal

Frequently Asked Questions – E-Filing

❖ E-Filing

1. [WHAT IS E-FILING?](#)

Electronic filing or E-filing is the ability to file forms and submissions online with the Pay Equity Hearings Tribunal (“PEHT”).

2. [WHO CAN USE E-FILING?](#)

Anyone can E-file with an internet connection and a valid email address. Review the section below on System Requirements.

3. [HOW MUCH DOES E-FILING COST?](#)

There is no cost to e-file.

4. [WHEN CAN I USE E-FILING?](#)

You can file your form or submissions online 24 hours a day, seven days a week. In accordance with the PEHT’s Rules of Practice a filing received after 5.00 p.m. will be deemed to be filed on the next business day, unless otherwise accepted by the PEHT or the Registrar.

5. [IS E-FILING MANDATORY?](#)

No. E-Filing is only one of the options for filing submissions/forms.

If E-Filing is not your preferred method, you can continue to file forms with the PEHT using alternative methods (such as courier, registered mail, hand delivery) as permitted by the PEHT Rules of Practice.

6. [CAN I E-MAIL MY FORMS OR SUBMISSIONS TO THE Tribunal?](#)

No. Forms and submissions may be filed with the PEHT by a variety of methods including the Tribunal’s e-filing system, but not by e-mail.

7. IS THE PEHT E-FILING SYSTEM ENCRYPTED?

The e-filing system is not encrypted nor is it mandatory. Accordingly, you may wish to consider filing your form and any documents by another method permitted under the PEHT's Rules.

8. CAN A REPRESENTATIVE (LEGAL OR NOT) E-FILE ON BEHALF OF A CLIENT?

Yes. There is a section in the forms for the party's contact person to be identified.

9. WHERE CAN I FIND THE FORMS AND IN WHAT FORMAT ARE THEY?

Forms are available in English and in French in PDF format and can be found on the [PEHT website](#). Alternatively, you can request a paper copy of the forms from the PEHT offices located at 505 University Ave., 2nd Floor, Toronto, ON M5G 2P1, Tel number (416)326-7500 Toll-free: 1-877-339-3335 Hearing Impaired (TTY): 416-212-7036

❖ **System Requirements for E-filing**

10. WHAT ARE THE TECHNICAL REQUIREMENTS FOR USING E-FILING?

You must have an internet connection and a valid email address and up-to-date Adobe Acrobat in order to submit your form online.

11. CAN I COMPLETE THE FORM USING MY MOBILE DEVICE SUCH AS SMARTPHONE OR TABLET?

No. Currently, the version of Adobe Acrobat used on mobile devices is incompatible with the PEHT E-filing system.

12. WHAT IS THE SOFTWARE REQUIRED TO VIEW AND COMPLETE THE PDF FORMS ONLINE?

Download and complete the PEHT forms using ONLY an up-to-date version of Adobe Acrobat.

Do not complete the forms within your Internet browser as you may encounter some of the following issues:

- You may not be able to attach documents, print or submit the form.
- You will lose the information you completed if you leave the form and browse to other web pages in the same browser window.

- The 'back' or 'forward' buttons on your browser will close the form and delete all of your entered information.

If the form opens in your internet browser, save it, then close the form that is open in the browser and then reopen your saved form using Adobe software.

The latest version of Adobe reader is available for free and can be downloaded from the following website: <http://www.adobe.com/products/acrobat/readstep.html>.

13. [How Do I Check Which Version of Adobe Acrobat I Am Using?](#)

Open Adobe Acrobat, click on 'Help' from the menu bar and then click on 'About Adobe Acrobat'.

❖ **Printing the Form**

14. [CAN I PRINT A BLANK FORM AND COMPLETE IT BY HAND?](#)

Yes. To print a blank form **use only** the 'Print Blank Form' button located at the top right corner of the form.

15. [IS THERE A DIFFERENCE BETWEEN THE 'PRINT' BUTTONS ON THE FORM? WHICH ONE SHOULD I USE AND WHEN?](#)

Yes. The different Print buttons print the form in different ways and to different points in the form.

- 'Print Blank Form' Button is used to print a blank form and expands all hidden sections. This blank form is the one to complete by hand.
- The Print button located at the bottom of the 'File with the Tribunal' page prints the entire form. This button is used to print the entire completed form, to be filed with the PEHT or for your records.

16. [CAN I PRINT THE ATTACHMENTS USING THE 'PRINT' BUTTONS LOCATED WITHIN THE FORM?](#)

No. Any documents attached to the form will not be printed by the 'Print' buttons. Attached documents should be opened and printed separately.

17. [OTHER THAN THE 'PRINT' BUTTONS IN THE FORM, CAN I PRINT ANOTHER WAY?](#)

No. Do not use other printing options such as File > Print, Adobe print icon, CTRL P or other 'print' buttons located within the form. This will result in printing an incomplete form.

❖ **Save Form**

18. [CAN I SAVE THE FORM DIRECTLY FROM THE PEHT WEBSITE WITHOUT VIEWING IT?](#)

Yes. You can save a form from the PEHT website without viewing it by right-clicking on the hyperlinked form title, selecting "Save As" and then saving the blank form to your computer.

19. [HOW CAN I SAVE THE FORM?](#)

You can save the blank form after viewing it or a partially completed form or a fully completed form by using one of the following 3 methods:

- 1) Click on any 'Save' button **within** the form; or
- 2) Click on the small disk icon that appears in Adobe Acrobat; or
- 3) Go to File > Save As

20. [CAN I SAVE THE FORM IF I HAVE PARTIALLY COMPLETED IT?](#)

Yes. You may save the form any time. Refer to question 'How Can I Save the Form?'

21. [CAN I SAVE THE COMPLETED FORM WITHOUT LOSING ANY INFORMATION ENTERED?](#)

Yes. You may save the form at any time. Refer to question 'How Can I Save the Form?'

22. [CAN I SAVE THE FORM AND RE-USE IT IN THE FUTURE](#)

Although the forms can be saved, it is recommended that you download the form directly from the PEHT website each time to ensure that you are using the most current version as the forms are updated on a regular basis.

❖ Attaching Documents

23. HOW DO I INCLUDE SUPPORTING DOCUMENTS WHEN I E-FILE A FORM?

Attach supporting documents to the form by uploading them into the 'Attached Documents' section of each form.

The file name must contain ONLY letters 'A-Z' or 'a-z', numbers '0-9', underscore '_' or dash '-'. If other characters are used, the form and attachment(s) will not be successfully submitted.

24. IS THERE A SIZE LIMIT ON THE DOCUMENTS THAT CAN BE ATTACHED TO THE E-FORM?

The maximum size of attachments is 15MB. The size of your attachments is calculated directly on the form so you will know when you are approaching the maximum size permitted.

Refer [here](#) for detailed guidance on electronic filing of large documents.

25. IS THERE ANY LIMIT ON THE NUMBER OF THE DOCUMENTS THAT CAN BE ATTACHED TO THE E-FORM?

No. There is no limit on the number of the documents that can be attached to the E-form provided the total size of all the attached documents is less than or equal to 15MB.

26. CAN THE ATTACHED DOCUMENTS BE PASSWORD PROTECTED?

No. Any document submitted online should not be password protected.

27. WHAT ARE THE DIFFERENT FILE FORMATS THAT CAN BE ATTACHED TO AN E-FORM?

The different file formats that can be attached are:

Images: .jpg, .jpeg, .bmp, .png, .tif, .tiff, .gif

Spreadsheets: .xls, .xlsx, .csv, .ods

Structured Documents: .htm, .html

Word/text/PDF documents: .doc, .docx, .txt, .pdf, .rtf, .odt, .xps, .pptx, .ppt, .msg

28. [WHY DO I GET AN ERROR MESSAGE WHEN I AM TRYING TO ATTACH A DOCUMENT IN A PERMITTED FORMAT?](#)

You might get an error message if you are attempting to attach a document that is still open. Close the document and then attach. Or the error message might be because you have exceeded the maximum attachment's size limit.

❖ **Contact Information - Part A of the form**

29. [HOW DO I COMPLETE THE CONTACT INFORMATION FOR EACH PARTY AND THEIR REPRESENTATIVES, IF ANY?](#)

Provide the full contact information of all the parties in the proceeding, and any Representatives/Contact persons. This includes mailing address(es), phone number(s) and/or e-mail address(es).

If your chosen representative is not a member of the Law Society of Ontario or does not fall within an exception pursuant to the Law Society Act or the by-laws of the Law Society of Ontario, the PEHT may not permit that person to represent you.

30. [HOW DO I ADD/DELETE MULTIPLE PARTIES OR REPRESENTATIVES/CONTACT PERSONS?](#)

If you are completing the form electronically: Click the 'Add' button in the applicable section and complete all the contact information.

If you wish to delete a party click the '-' minus sign.

In instances where there are multiple individuals from the same organization (for example, multiple union representatives or multiple lawyers at the same law firm), you are not required to complete an additional contact section for any subsequent individual. You can simply add their name, email address and phone number in the 'Additional Contact Information' box.

❖ **Certificate of Delivery Form (Form 3)**

31. [HOW TO COMPLETE THE CERTIFICATE OF DELIVERY \(FORM 3\) ELECTRONICALLY?](#)

- For each party to whom a form and documents have been delivered, you must complete the delivery information separately.
- Use the 'Add' button to add an additional section to the Certificate of Delivery for additional parties as required.

- Parties may deliver applications by e-mail. In the Certificate of Delivery, a party relying upon delivery by email must confirm to the PEHT that the email used for delivery is one which can be relied upon for effective notice to the responding party and/or other affected party, by declaring that the parties have corresponded via the email address used for delivery.
- Go to 'File with the Tribunal' page and print or save the completed form with completed Certificate of Delivery for your records.

❖ **Submit - E-filing your form**

32. [CAN I SUBMIT THE FORM ONLINE IF I DO NOT HAVE A VALID EMAIL ADDRESS?](#)

No. You must provide a valid email address in order to file electronically. If you do not have a valid email address, file a paper copy of the form using an alternative method permitted by the PEHT's Rules of Practice.

33. [WHAT HAPPENS IF I SUBMIT THE FORM ELECTRONICALLY MULTIPLE TIMES?](#)

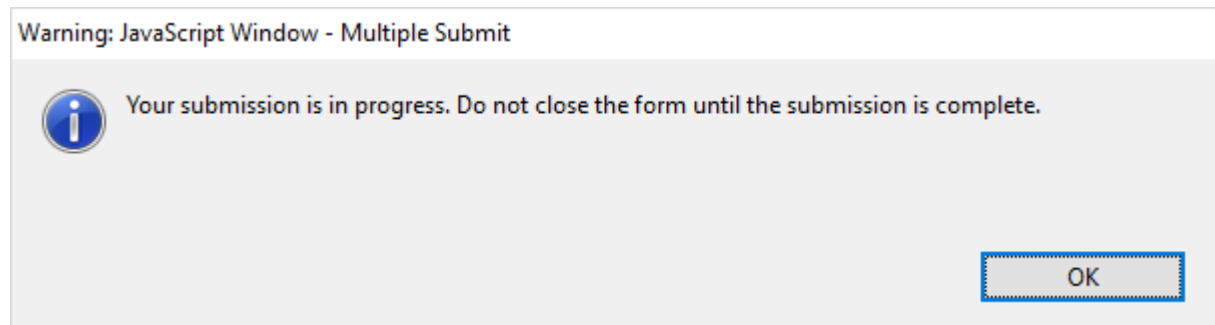
Only file your form once. If the PEHT receives your form more than once, it will only accept the first form received.

34. [WILL THE PEHT RETURN MY ELECTRONICALLY SUBMITTED FORM BACK TO ME?](#)

No. Save a copy of your form and all attachments prior to submitting as the PEHT will not return them to you.

35. [WHAT HAPPENS AFTER I CLICK SUBMIT?](#)

You will be getting a final reminder message to print or save your form. When you decide to proceed, you will get this message.



Do not close your form at this point or your submission will be interrupted. Wait until you get a confirmation that the submission is successful.

36. [HOW DO I KNOW IF MY FORM HAS BEEN E- FILED SUCCESSFULLY?](#)

After submitting the form, a confirmation message will be displayed on your computer screen. This confirmation message will be the indication of your successful submission.

You will also receive an email at the email address you provided in the 'File with the Tribunal' page, which will confirm that the PEHT has received your submission. This email will include a confirmation number. If you do not receive a confirmation email within one hour, please contact the PEHT during business hours.

37. [IS THE CONFIRMATION NUMBER IN THE CONFIRMATION EMAIL THE SAME AS THE PEHT'S CONFIRMATION OF FILING?](#)

No. The number in the confirmation email is only a notification that your form has been submitted successfully to the PEHT. If your form is an initiating application, the PEHT will issue a Confirmation of Filing to all parties with a PEHT File Number.

❖ **Electronic Submissions form**

38. [WHAT IS THE ELECTRONIC SUBMISSIONS FORM?](#)

The 'Electronic Submissions Form' allows parties to attach and file submissions, letters or other material electronically.

39. [WHAT SHOULD THE ELECTRONIC SUBMISSIONS FORM NOT BE USED FOR?](#)

The 'Electronic Submissions Form' is NOT to be used to file PEHT forms such as applications/responses. Forms will not be processed if attached to the 'Electronic Submissions Form'.

❖ **Technical Difficulties?**

40. [WHAT IF I AM EXPERIENCING TECHNICAL DIFFICULTIES?](#)

If you are experiencing technical difficulties, it could be as a result of one of the following;

- You are not connected to the internet. Check your internet connection
- You have not opened the form using Adobe Acrobat and the document might be opened in your browser instead. Save the form and open with Adobe Acrobat.
- You are not using an up-to-date Adobe Acrobat. Download the latest Adobe Acrobat Reader from the following website: <http://www.adobe.com/products/acrobat/readstep.html>.

41. WHAT SHOULD I DO IF I CAN'T SUBMIT THE FORM ELECTRONICALLY?

If you can open the form and complete it electronically but are unable to submit it, then print your completed form and file it in a method permitted by the PEHT. Report the issue to PEHT.

If you cannot print a blank form for any reason, you may contact the PEHT by phone (416-326-7500), toll-free 1-877-339-3335 or by mail (505 University Avenue, 2nd Floor, Toronto, ON M5G 2P1) and the PEHT will send you the requested form.

E-Filing Large Documents

Where attachments exceed the 15mb limit for e-filed documents, parties can upload files to a cloud storage service (such as OneDrive or Dropbox) and share the link to these files.

1. Upload documents to a storage service and generate a share link (see instructions below on how to do so using OneDrive or Dropbox)
2. Paste the link generated into your covering letter to the Registrar.
3. Save the document and attach it to the A-108, application or response being submitted
4. Ensure that the link in your document is functional

Generating OneDrive Share Link

1. Log into <https://onedrive.live.com/about/en-us/signin/> using Microsoft account
 - Microsoft accounts include emails ending with @outlook.com, @hotmail.com, or other emails associated to a Microsoft account
2. Upload your document to OneDrive
 - Click on “Upload” from the list of options and select “Files” to upload a single document or “Folder” to upload an entire folder
3. Generate the link for the document
 - Click the three vertical dot icon after hovering over the document in the list and select “Copy” from the drop-down menu
 - Paste link into your covering letter

Generating Dropbox Share Link

1. Sign into <https://www.dropbox.com/login> with your Dropbox account
 - A free Dropbox account can be created using just your email
2. Upload your documents to Dropbox
 - Click on “Upload” from the list of options and select “Files” to upload a single document or “Folder” to upload an entire folder
3. Generate the link for the document
 - Hover over the file/s you want to share and select the “copy” button to generate a unique link
 - Paste link into your covering letter

If you have difficulties, please contact a Customer Service Representative at one of the numbers available on Pay Equity Tribunal's website.